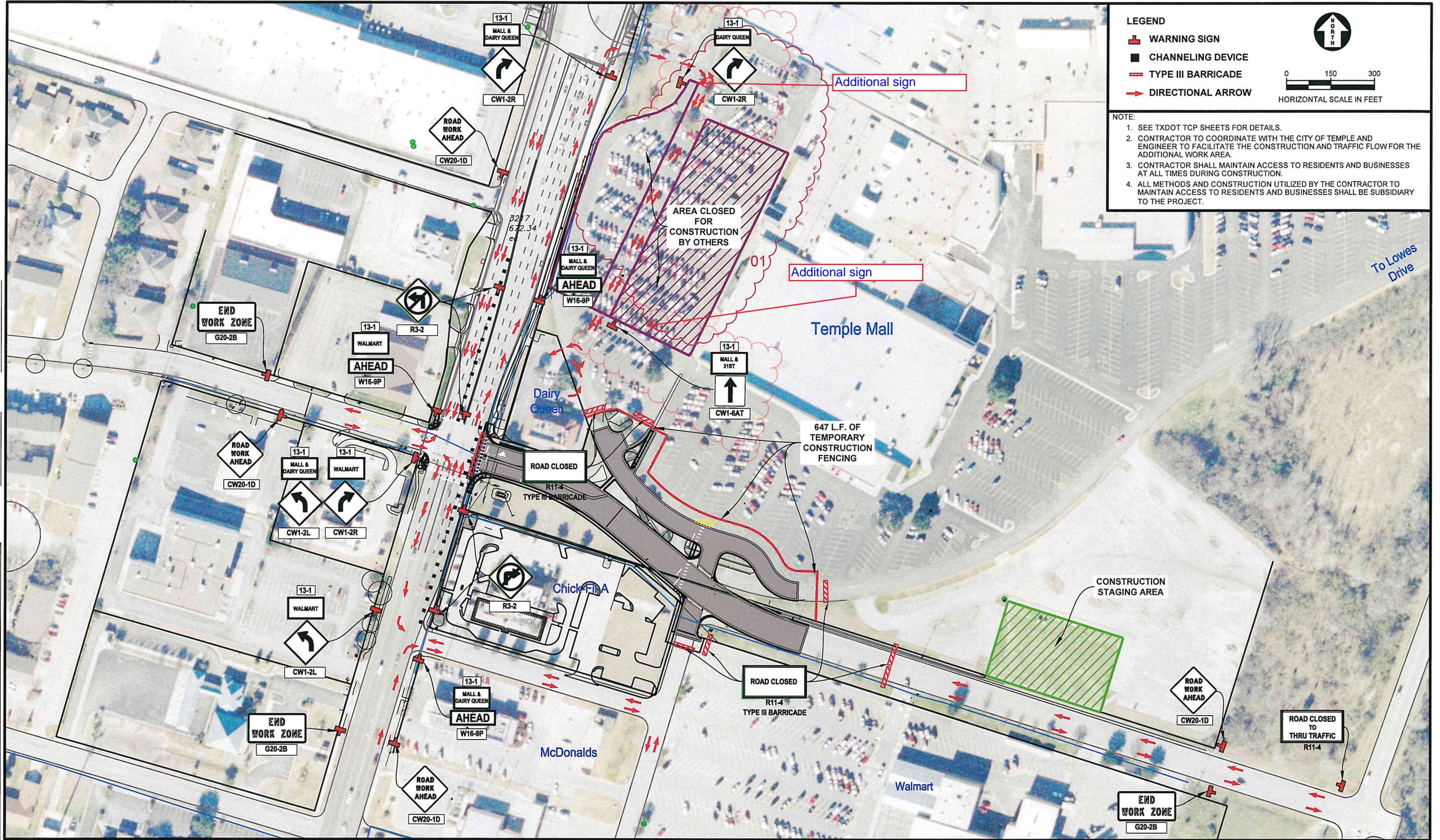


FILE: P:\Temple\2018\2018-158 Azalea Drive\CAD\Plans\working plan set\TCP\PROPOSED LAYOUT.dwg LAST SAVED: 1/26/2023 9:05:53 AM LAYOUT: TCP PROPOSED LAYOUT



**LEGEND**

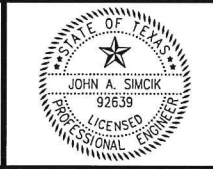
- WARNING SIGN
- CHANNELING DEVICE
- TYPE III BARRICADE
- DIRECTIONAL ARROW

**NOTE:**

1. SEE TXDOT TCP SHEETS FOR DETAILS.
2. CONTRACTOR TO COORDINATE WITH THE CITY OF TEMPLE AND ENGINEER TO FACILITATE THE CONSTRUCTION AND TRAFFIC FLOW FOR THE ADDITIONAL WORK AREA.
3. CONTRACTOR SHALL MAINTAIN ACCESS TO RESIDENTS AND BUSINESSES AT ALL TIMES DURING CONSTRUCTION.
4. ALL METHODS AND CONSTRUCTION UTILIZED BY THE CONTRACTOR TO MAINTAIN ACCESS TO RESIDENTS AND BUSINESSES SHALL BE SUBSIDIARY TO THE PROJECT.

01	03-28-2022	CHANGED DETOUR ROUTE	JAS
NO.	DATE	REVISION	BY
© 2012 Kasberg, Patrick & Associates, LP		Plot Date:	
KPA Firm Registration Number F-510		1/26/2023 9:13:44 AM	
		Plotted By:	
		CBELL	

PROJECT NO.	2018-158
DRAWN BY	Fabian T. Gomez
DESIGNED BY	John A. Simcik, P.E.
APPROVED BY	
DATE	12-03-2020



**KPA**

**KASBERG, PATRICK & ASSOCIATES, LP**  
**CONSULTING ENGINEERS**  
 TEMPLE, TEXAS 76501

**CITY OF TEMPLE, TEXAS**  
 AZALEA DRIVE REALIGNMENT

TCP PROPOSED LAYOUT

SHEET NO.  
**CS-01** OF  
 01 SHEETS